

# Carrier HXC 115

## Specifications

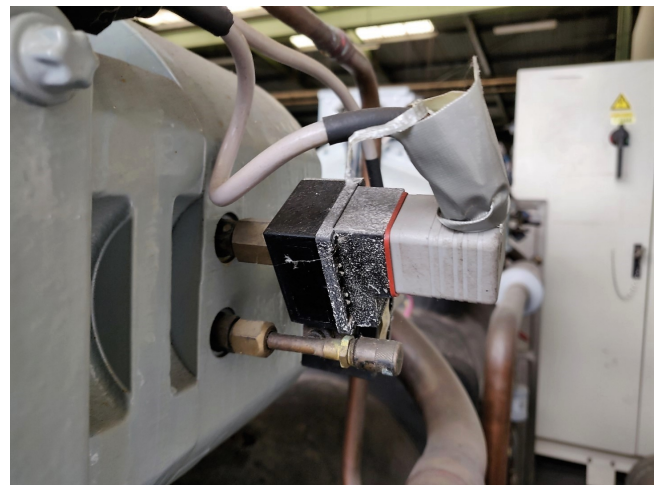
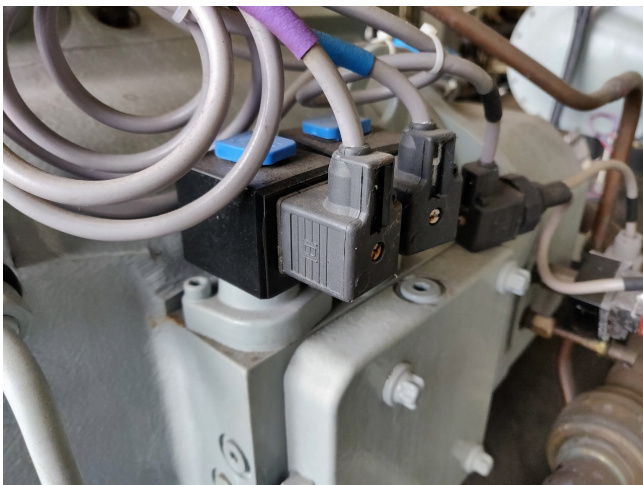
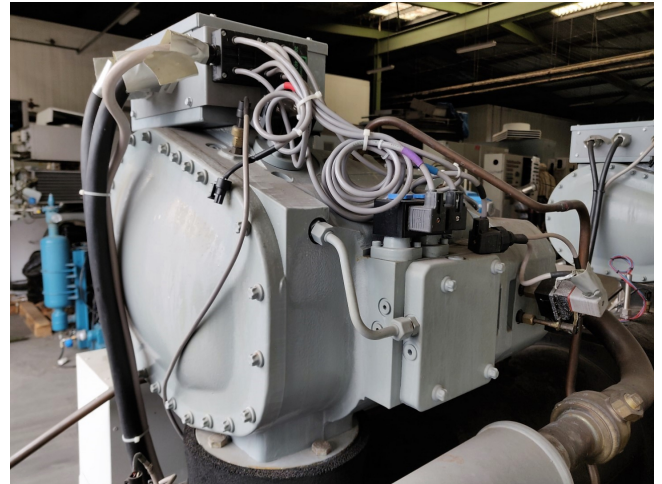
|                      |   |
|----------------------|---|
| Brand                | Carrier   |
| Tipo                 | HXC 115   |
| Product type         | Water Cooled Chiller  |
| Capacidad kW         | 404   |
| Refrigerante         | Freon   |
| Tipo de Refrigerante | R 134 A   |
| Peso kg.             | 2765  |
| Sizes                | 2500x1450x1900 mm<br>(LxWxH)                                |
| Remarks              | Electric wiring diagram included                            |
| Más Informacion?     | For more information please see attached pdf below. Page 14 |
| Stock                | 1   |

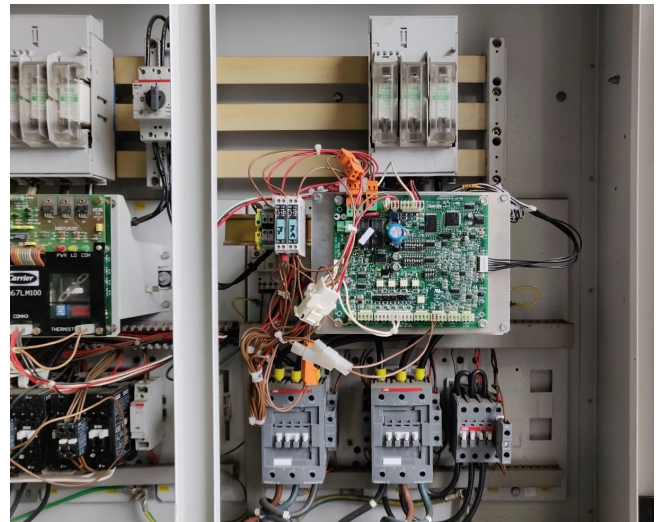
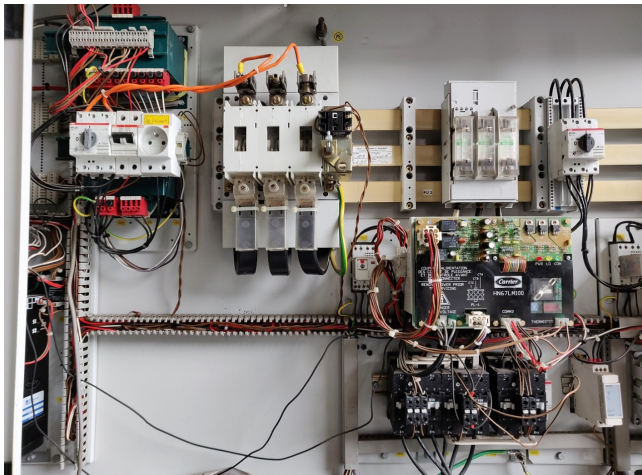
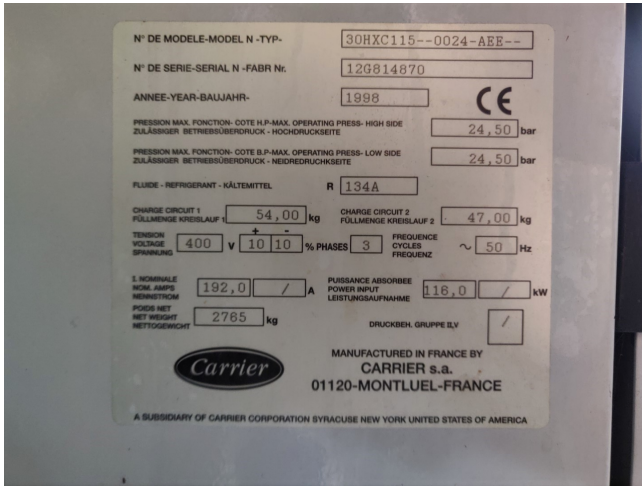


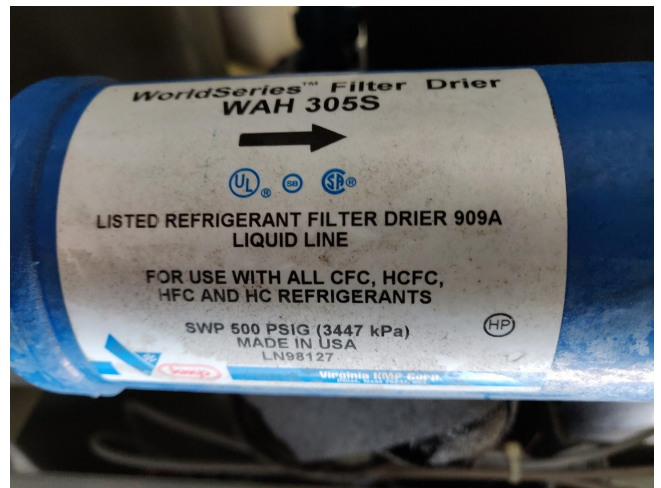
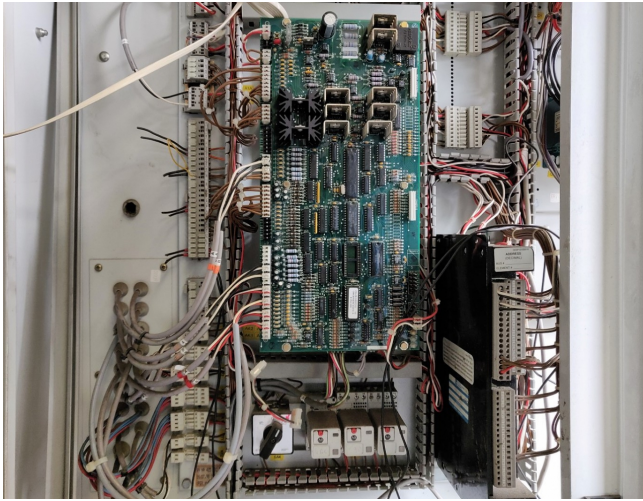
## Description

### Used Carrier HXC 115

Used Water Cooled Waterchiller Carrier 30 HXC 115. This Waterchiller uses refrigerant R134A and has 2x Carrier/Carlyle 06NW2174S7NA-A00 Compressors / Worldseries Filter Drier WAH 305S // Including control panel







**Carrier s.a.**  
 BP 49 Route de Thal  
 01120 Montluel (FRANCE)  
 Tel : 33 (0) 4 72 25 21 08  
 Fax : 33 (0) 4 72 25 23 88

**LISTE DE PIECES SPARE PARTS LIST**  
 REF: 30HXCI15-0024-AEE-210  
 S/N: 12G814870  
 Date: 02/07/98 Page: 1/

| SOUS-ENSEMBLY / KIT ASSEMBLY | CARRIER REFERENCE / PART NUMBER | QTY | DESCRIPTION               | SPECIFICATION  | REFERENCE |
|------------------------------|---------------------------------|-----|---------------------------|----------------|-----------|
|                              | --FL--12EQ-005--EE--            | 1   | BREAKER                   | S252C 1,6A     | QMK       |
|                              | --FL--12LM-008--EE--            | 1   | BREAKER                   | M5325 4A       | QFK       |
|                              | 320B-400--012--C--              | 2   | CABLE -EXPANSION VALVE-   |                |           |
|                              | --MN--67LM-100--C--             | 2   | CARD -COMPRESSOR-         | AA 7112-6      | AK        |
|                              | --DP--12AS-006--EE--            | 2   | CARD -EXPANSION VALVE-    |                | AK        |
|                              | --DP--12AS-004--EE--            | 2   | CARD -6 DIGIT OUTPUT-     |                | AK        |
|                              | --DP--12AS-005--EE--            | 1   | CARD -GANALO 4IM/2OUTPUT- |                | AK        |
|                              | --DP--12AS-001--EE--            | 1   | CARD MAIN -INLET/OUTLET-  |                | AK        |
|                              | --XN--12YC-026--EE--            | 6   | COIL -UNLADER COIL-       | 24 V           | YK        |
|                              | 06NH2174-S--7NAC--              | 1   | COMPRESSOR                | 66T            | ECW       |
|                              | 06NH2250-S--7NAC--              | 1   | COMPRESSOR                | 66T            | ECW       |
|                              | --OJ--12SV-050--EE--            | 1   | CONTACT AUX. BLOC-        | IC10-01 30S CZ | XTK       |
|                              | --OK--12XB-011--EE--            | 2   | CONTACT AUX. BLOC-        |                |           |
|                              | --CM--12XA-010--EE--            | 3   | CONTACT -AUXILIARY-       | B 50           |           |
|                              | --CM--12XA-011--EE--            | 2   | CONTACT -AUXILIARY-       | EH 90-EH 145   |           |
|                              | --CM--12XC-001--EE--            | 1   | CONTACT -AUXILIARY-       | 1 0 / 1 F      |           |
|                              | --CM--12XC-002--EE--            | 1   | CONTACT -AUXILIARY-       | CAL 1611 C     |           |
|                              | --CM--12BE-001--EE--            | 2   | CONTACTOR                 | EH-90-30-11    | KMK       |
|                              | --CM--12BE-015--EE--            | 2   | CONTACTOR                 | B-40-30-00     | KMK       |
|                              | --CM--12BE-016--EE--            | 2   | CONTACTOR                 | B-50-30-00     | KMK       |
|                              | --CM--12JA-002--EE--            | 2   | CONTACTOR                 | ES320A230V252  |           |
|                              | --DC--09RA-307--C--             | 2   | COUPLING -LIQUID SENSOR-  |                |           |
|                              | 320B-401--234--C--              | 1   | EXPANSION VALVE           | 320B 401 234   | EDX       |
|                              | 320B-401--246--C--              | 1   | EXPANSION VALVE           | 320B 401 246   | EDX       |
|                              | --KH--11M-200--C--              | 2   | FILTER -LIQUID LINE-      |                |           |
|                              | 50HX-500--159--C--              | 2   | FILTER -OIL-              |                |           |
|                              | --FA--12BJ-160--EE--            | 3   | FUSE                      | 100 AMP        | FUM       |
|                              | --FA--12BJ-160--EE--            | 3   | FUSE                      | 160 AMP        | FUM       |
|                              | 09HX-901--952--EE--             | 2   | GASKET -COND. FLANGE-     |                |           |
|                              | 10HX-505--942--EE--             | 2   | GASKET -COOLER WATER BOX- |                |           |
|                              | --KK--71EM-234--C--             | 2   | GASKET -DISCHARGE O RING- |                |           |
|                              | 10HX-503--112--C--              | 2   | GASKET -FLANGE-           |                |           |
|                              | --KK--71EM-552--C--             | 2   | GASKET -SUCTION O RING-   |                |           |
|                              | --UX--120A-006--EE--            | 2   | GASKET -SUCTION O RING-   | 4,9838"        |           |

